



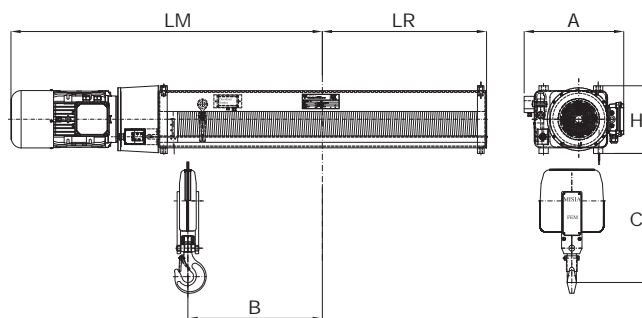
## Paranchi speciali SERIE XML XML SERIES special hoists

## PARANCI SPECIALI S2 - A 2 TIRI DI FUNE (2/1) CORSE GANCIO LUNGHE SPECIAL HOIST S2 - 2 ROPE FALLS (2/1) HIGH LIFTING HEIGHT

Tipo 5 APPOGGIATO - SUPPORTED  
Tipo 5C1 SOSPESO - SUSPENDED



Tipo 5 / Tipo 5C1



### CARATTERISTICHE TECNICHE PARANCI SERIE XML - TECHNICAL DATA HOISTS XML SERIES

Portata max Max capacity	Gruppo Group	Paranco Hoist	Tiri fune Rope falls	Corse gancio Hook travel				Velocità sollevamento - Potenza motore Lifting speed - Motor power							
				m	m	m	m	N		NA		V		VA	
								m/min	kW	m/min	kW	m/min	kW	m/min	kW
1600	2 m	308	2/1	46	57	68	79	8	2,5	8/2,6	2,5/0,8	12	4	12/4	4/1,3
2500	2 m	312	2/1	32	40	48	56	8	4	8/2,6	4/1,3	12	6	12/4	6/2
3200	2 m	316	2/1	32	40	48	56	8	5	8/2,6	5/1,6	12	7	12/4	7/2,3
5000	2 m	525	2/1	32	40	48	56	8	8	8/2,6	8/2,6	12	12	12/4	12/4

### 5 - APPOGGIATO / 5C1 - SOSPESO - 5 - SUPPORTED / 5C1 - SUSPENDED

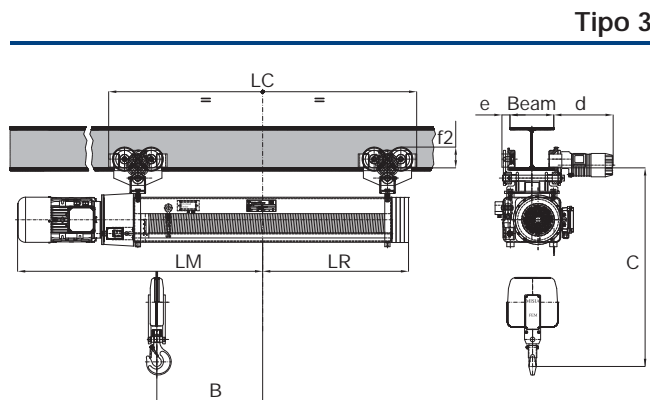
Paranco Hoist	Portata Capacity	Corsa gancio Hook travel	Dimensioni Dimensions					Motori cilindrici Cylindrical motors				Peso Weight		
			C mm	H mm	A mm	LR mm	B mm	Speed m/min	LM mm	Speed m/min	LM mm			
308	1,6	46	570	370	450	625	459	N	1260	V	1260	320		
						760	594						1400	340
						890	727						1530	360
						1025	862						NA	1660
312	2,5	32	640	370	450	625	459	N	1260	V	1330	330		
						760	594						1400	350
						890	727						1530	370
						1025	862						NA	1660
316	3,2	40	640	370	450	625	459	N	1300	V	1330	330		
						760	594						1440	350
						890	727						1570	370
						1025	862						NA	1700
525	5	32	730	440	510	640	445	N	1400	V	1450	410		
						775	580						1530	440
						910	715						1665	470
						1045	850						NA	1800

N - V - NA - VA = velocità di sollevamento (vedi tabella sopra) / lifting speeds (see table above)

## Paranchi speciali SERIE XML XML SERIES special hoists

PARANCI SPECIALI S2 - A 2 TIRI DI FUNE (2/1)  
CORSE GANCIO LUNGHE  
SPECIAL HOIST S2 - 2 ROPE FALLS (2/1)  
HIGH LIFTING HEIGHT

Tipo 3 CARRELLO MONOTRAVE A INGOMBRO NORMALE  
STANDARD HEADROOM TROLLEY



### CARATTERISTICHE TECNICHE PARANCI SERIE XML - TECHNICAL DATA HOISTS XML SERIES

Portata max Max capacity	Gruppo Group	Paranco Hoist	Tiri fune Rope falls	Corse gancio Hook travel				Velocità sollevamento - Potenza motore Lifting speed - Motor power							
				m	m	m	m	N		NA		V		VA	
								m/min	kW	m/min	kW	m/min	kW	m/min	kW
1600	2 m	308	2/1	46	57	68	79	8	2,5	8/2,6	2,5/0,8	12	4	12/4	4/1,3
2500	2 m	312	2/1	32	40	48	56	8	4	8/2,6	4/1,3	12	6	12/4	6/2
3200	2 m	316	2/1	32	40	48	56	8	5	8/2,6	5/1,7	12	7	12/4	7/2,3
5000	2 m	525	2/1	32	40	48	56	8	8	8/2,6	8/2,6	12	12	12/4	12/4

### 3 - CARRELLO A INGOMBRO NORMALE - 3 - STANDARD HEADROOM TROLLEY

Paranco Hoist	Portata Capacity	Corsa gancio Hook travel	Dimensioni Dimensions							Motori cilindrici Cylindrical motors				Peso Weight			
			c mm	d mm	e mm	LC mm	LR mm	B mm	f2 mm	Speed m/min	LM mm	Speed m/min	LM mm				
308	1,6	1070	410	55	46	1580	800	459	145	N	1260	V	1260	520			
					57	1850	940	594							1400	1400	540
					68	2115	1070	727							1530	1530	560
					79	2385	1200	862							1660	1660	580
312	2,5	1140	410	55	32	1580	800	459	145	N	1260	V	1330	530			
					40	1850	940	594							1400	1470	550
					48	2115	1070	727							1530	1600	570
					56	2385	1200	862							1660	1730	590
316	3,2	1140	410	55	32	1580	800	459	145	N	1300	V	1330	530			
					40	1850	940	594							1440	1470	550
					48	2115	1070	727							1570	1600	570
					56	2385	1200	862							1700	1730	590
525	5	1270	430	70	32	1660	825	445	165	N	1400	V	1450	670			
					40	1930	960	580							1530	1580	700
					48	2200	1100	715							1665	1715	730
					56	2470	1230	850							1800	1850	760

Velocità carrello / Trolley speed: 18 - 18/6 m/min

N - V - NA - VA = velocità di sollevamento (vedi tabella sopra) / lifting speeds (see table above)

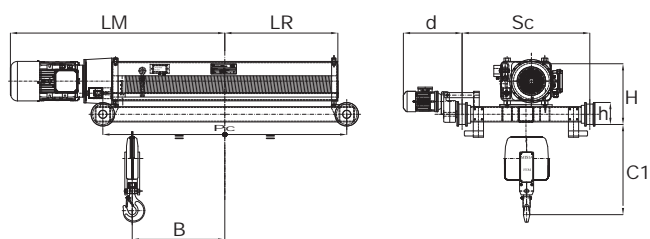
## Paranchi speciali SERIE XML XML SERIES special hoists

## PARANCI SPECIALI S2 - A 2 TIRI DI FUNE (2/1) CORSE GANCIO LUNGHE SPECIAL HOIST S2 - 2 ROPE FALLS (2/1) HIGH LIFTING HEIGHT

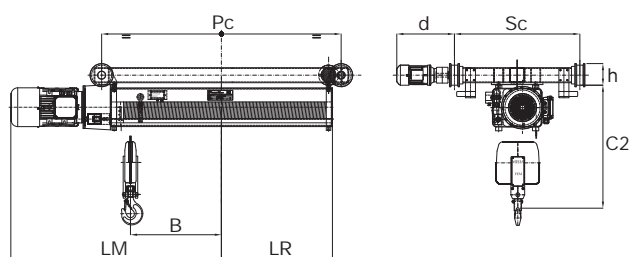
**Tipo 53** CARRELLO BITRAVE CON PARANCO APOGGIATO  
BIRAIL TROLLEY HOIST SUPPORTED

**Tipo 53C1** CARRELLO BITRAVE CON PARANCO SOSPESO  
BIRAIL TROLLEY HOIST SUSPENDED

Tipo 53



Tipo 53C1



### CARATTERISTICHE TECNICHE PARANCI SERIE XML - TECHNICAL DATA HOISTS XML SERIES

Portata max Max capacity	Gruppo Group	Paranco Hoist	Tiri fune Rope falls	Corse gancio Hook travel				Velocità sollevamento - Potenza motore Lifting speed - Motor power							
				m	m	m	m	N		NA		V		VA	
								m/min	kW	m/min	kW	m/min	kW	m/min	kW
1600	2 m	308	2/1	46	57	68	79	8	2,5	8/2,6	2,5/0,8	12	4	12/4	4/1,3
2500	2 m	312	2/1	32	40	48	56	8	4	8/2,6	4/1,3	12	6	12/4	6/2
3200	2 m	316	2/1	32	40	48	56	8	5	8/2,6	5/1,7	12	7	12/4	7/2,3
5000	2 m	525	2/1	32	40	48	56	8	8	8/2,6	8/2,6	12	12	12/4	12/4

### 53-53C1 - CARRELLO BITRAVE - 53-53C1 - BIRAIL TROLLEY

Paranco Hoist	Portata Capacity	Corsa gancio Hook travel	Dimensioni Dimensions											Motori cilindrici Cylindrical motors				Peso Weight
			Sc mm	C1 mm	H mm	C2 mm	h mm	d mm	Pc mm	B mm	Lr mm	f2 mm	Speed m/min	LM mm	Speed m/min	LM mm	Kg	
308	1,6	46	1000	570	490	900	175	480	1375	459	625	145	N	1260	V	1260	550	
		1645							594	760	1400			1400				
		1910							727	890	1530			1530				
		2180							862	1025	1660			1660				
312	2,5	32	1000	640	490	965	175	480	1375	459	625	145	N	1260	V	1330	560	
		1645							594	760	1400			1470				
		1910							727	890	1530			1600				
		2180							862	1025	1660			1730				
316	3,2	32	1000	640	490	965	175	480	1375	459	625	145	N	1300	V	1330	590	
		1645							594	760	1440			1470				
		1910							727	890	1570			1600				
		2180							862	1025	1700			1730				
525	5	32	1000	730	550	1110	175	480	1400	445	640	165	N	1400	V	1450	650	
		1670							580	775	1530			1580				
		1940							715	910	1665			1715				
		2210							850	1045	1800			1850				

N - V - N A - V A = velocità di sollevamento (vedi tabella sopra) / lifting speeds (see table above)

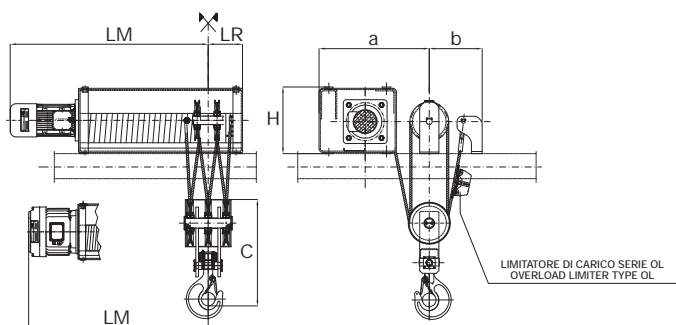
## Paranchi speciali 6/1 6/1 special hoists

PARANCI SPECIALI A SINGOLA USCITA FUNE  
DAL TAMBURO 6/1  
SPECIAL HOIST WITH SINGLE OUTPUT  
FROM THE DRUM 6/1

**SR6** A 6 TIRI DI FUNE (6/1) - 6 ROPE FALLS (6/1)  
**Tipo 5** PARANCO APPOGGIATO - SUPPORTED HOIST  
**Tipo 53** CARRELLO PARANCO MONOROTAIA  
 HOIST TROLLEY BIRAIL

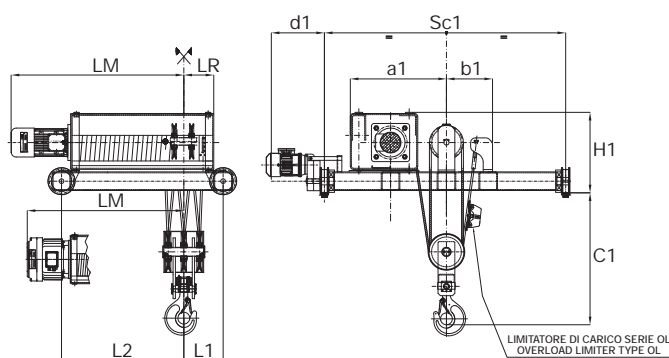
SR6

Tipo 5



SR6

Tipo 53



### SR6 - A 6 TIRI DI FUNE (6/1) - SR6 - 6 ROPE FALLS (6/1)

Paranco/Hoist		XM	740			750			950			963			980		
Portata/Capacity		kg	24000			30000			30000			37500			48000		
Gruppo/Group		FEM	1Am			1Am			2m			1Am			1Am		
Corsa gancio/Hook travel		m	6,5	11	15	6,5	11	15	6,5	10,5	16	6,5	10,5	16	6,5	10,5	16
Motori cilindrici Cylindrical motor	Vel. soll./Lift. speed	m/min	2,7			2,7			2,5			3			2,5		
	Pot. mot./Mot. power	kW	12			15			15			24			24		
	Vel. soll./Lift. speed	m/min	2,7/0,9			2,7/0,9			2,5/0,8			2,5/0,8			-		
	Pot. mot./Mot. power	kW	12/4			15/5			16/5,3			22/7,3			-		
Motori conici Conical motor	Vel. soll./Lift. speed	m/min	2,7			2,7			2			1,7			1,7		
	Pot. mot./Mot. power	kW	12,5			15			12,5			12,5			16		
	Vel. soll./Lift. speed	m/min	2,7/0,3			2,7/0,5			2/0,5			1,7/0,4			1,7/0,4		
	Pot. mot./Mot. power	kW	13/3			15/2,5			13/3			13/3			16/4		
Fig 5	H	mm	530			530			625			625			625		
	c	mm	900			1000			1100			1100			1240		
	a	mm	840			840			990			990			990		
	b	mm	380			380			480			480			480		
	LR	mm	250			257			277			288			189		
Motori cilindrici/Cylindrical motor	LM	mm	1175	1605	1995	1165	1595	1985	1305	1720	2220	1370	1790	2290	/	/	/
Motori conici/Conical motor	LM	mm	1065	1495	1885	1065	1495	1885	1125	1540	2040	1190	1610	2110	1290	1710	2210
Peso/Weight		≈ kg	900	1000	1080	980	1080	1160	1480	1630	1810	1480	1630	1810	1610	1760	1940
Fig 53	SC1	mm	2000			2000			2500			2500			2500		
	H1	mm	790			790			900			900			940		
	c1	mm	1100			1200			1300			1300			1450		
	d1	mm	570			570			570			570			570		
	a	mm	840			840			990			990			990		
	b	mm	380			380			480			480			480		
	L1	mm	420			430			460			520			450		
	L2	mm	670	1100	1500	680	1110	1510	800	1210	1710	850	1260	1760	950	1360	1860
LR	mm	250			257			277			288			189			
Motori cilindrici/Cylindrical motor	LM	mm	1175	1605	1995	1165	1595	1985	1305	1720	2220	1370	1790	2290	/	/	/
Motori conici/Conical motor	LM	mm	1065	1495	1885	1065	1495	1885	1125	1540	2040	1190	1610	2110	1290	1710	2210
Peso/Weight		≈ kg	1750	1900	2030	2030	2230	2410	2470	2720	3000	3170	3420	3700	3690	3940	4220

Velocità carrello / Trolley speed: 16 - 16/5,3 m/min

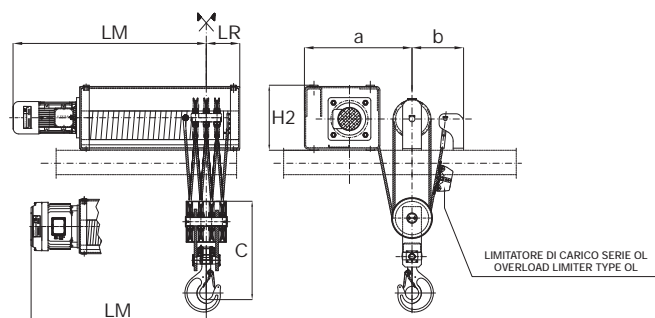
## Paranchi speciali 8/1 8/1 special hoists

PARANCI SPECIALI A SINGOLA USCITA FUNE  
DAL TAMBURO 8/1  
SPECIAL HOIST WITH SINGLE OUTPUT  
FROM THE DRUM 8/1

**SR8** A 8 TIRI DI FUNE (8/1) - 8 ROPE FALLS (8/1)  
**Tipo 5** PARANCO APPOGGIATO - SUPPORTED HOIST  
**Tipo 53** CARRELLO PARANCO MONOROTAIA  
HOIST TROLLEY BIRAIL

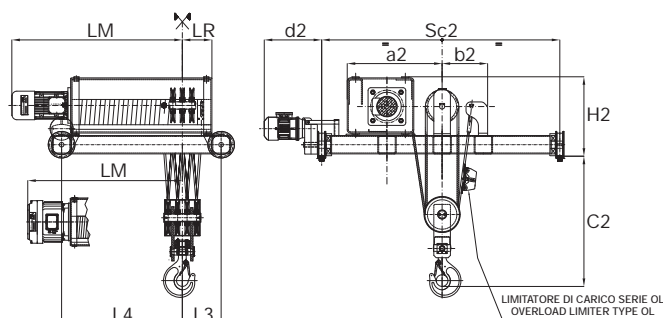
SR8

Tipo 5



SR8

Tipo 53



### SR8 - A 8 TIRI DI FUNE (8/1) - SR8 - 8 ROPE FALLS (8/1)

Paranco/Hoist		XM	740			750			950			963			980		
Portata/Capacity		kg	32000			40000			40000			50000			64000		
Gruppo/Group		FEM	1Am			1Am			2m			1Am			1Am		
Corsa gancio/Hook travel		m	4,5	8	11	4,5	8	11	5	8	12	5	8	12	5	8	12
Motori cilindrici Cylindrical motor	Vel. soll./Lift. speed	m/min	2			2			3			2,5			2		
	Pot. mot./Mot. power	kW	12			15			24			24			24		
	Vel. soll./Lift. speed	m/min	2/0,7			2/0,7			2/0,7			2/0,7			-		
	Pot. mot./Mot. power	kW	12/4			15/5			16/5,3			22/7,3			-		
Motori conici Conical motor	Vel. soll./Lift. speed	m/min	2			2			1,5			1,2			1,2		
	Pot. mot./Mot. power	kW	12,5			15			12,5			12,5			16		
	Vel. soll./Lift. speed	m/min	2/0,5			2/0,3			1,5/0,4			1,2/0,3			1,2/0,3		
	Pot. mot./Mot. power	kW	13/3			15/2,5			13/3			13/3			16/4		
Fig 5	H	mm	530			530			625			625			625		
	c	mm	950			1080			1160			1160			1200		
	a	mm	840			840			990			990			990		
	b	mm	380			380			480			480			480		
	LR	mm	250			257			277			288			295		
Motori cilindrici/Cylindrical motor	LM	mm	1175	1605	1995	1165	1595	1985	1305	1720	2220	1370	1790	2290	/	/	/
Motori conici/Conical motor	LM	mm	1065	1495	1885	1065	1495	1885	1125	1540	2040	1190	1610	2110	1185	1605	2105
Peso/Weight		≈ kg	990	1090	1170	1110	1210	1190	1600	1750	1930	1600	1750	1930	1740	1890	2070
Fig 53	SC2	mm	2000			2000			2500			2500			2500		
	H2	mm	790			790			900			940			960		
	c1	mm	1150			1250			1350			1350			1500		
	d2	mm	570			570			570			570			570		
	a2	mm	840			840			990			990			990		
	b2	mm	380			380			480			480			480		
	L3	mm	430			490			520			520			600		
	L4	mm	680	1110	1510	730	1160	1560	860	1270	1770	850	1260	1760	900	1310	1810
LR	mm	250			257			277			288			295			
Motori cilindrici/Cylindrical motor	LM	mm	1175	1605	1995	1165	1595	1985	1305	1720	2220	1370	1790	2290	/	/	/
Motori conici/Conical motor	LM	mm	1065	1495	1885	1065	1495	1885	1125	1540	2040	1190	1610	2110	1185	1605	2105
Peso/Weight		≈ kg	2030	2230	2410	2840	3040	3220	3290	3540	3820	3290	3540	3820	3760	4010	4290

Velocità carrello / Trolley speed: 16 - 16/5,3 m/min