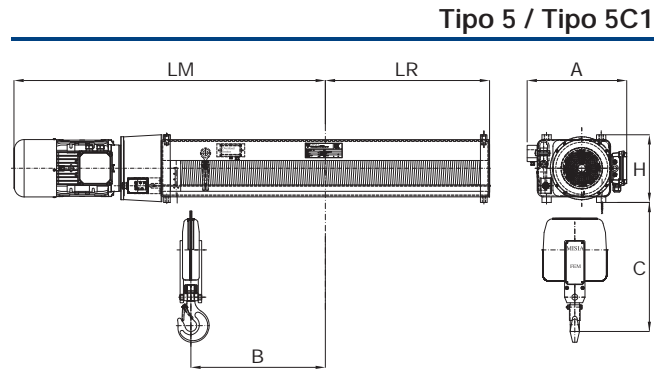


## Paranchi speciali SERIE XML XML SERIES special hoists

## PARANCI SPECIALI S2 - A 2 TIRI DI FUNE (2/1) CORSE GANCIO LUNGHE SPECIAL HOIST S2 - 2 ROPE FALLS (2/1) HIGH LIFTING HEIGHT

Tipo 5 APPOGGIATO - SUPPORTED  
Tipo 5C1 SOSPESO - SUSPENDED



### CARATTERISTICHE TECNICHE PARANCI SERIE XML - TECHNICAL DATA HOISTS XML SERIES

Portata max Max capacity	Gruppo Group	Paranco Hoist	Tiri fune Rope falls	Corse gancio Hook travel				Velocità sollevamento - Potenza motore Lifting speed - Motor power							
				m	m	m	m	N		NA		V		VA	
								m/min	kW	m/min	kW	m/min	kW	m/min	kW
1600	2 m	308	2/1	46	57	68	79	8	2,5	8/2,6	2,5/0,8	12	4	12/4	4/1,3
2500	2 m	312	2/1	32	40	48	56	8	4	8/2,6	4/1,3	12	6	12/4	6/2
3200	2 m	316	2/1	32	40	48	56	8	5	8/2,6	5/1,6	12	7	12/4	7/2,3
5000	2 m	525	2/1	32	40	48	56	8	8	8/2,6	8/2,6	12	12	12/4	12/4

### 5 - APPOGGIATO / 5C1 - SOSPESO - 5 - SUPPORTED / 5C1 - SUSPENDED

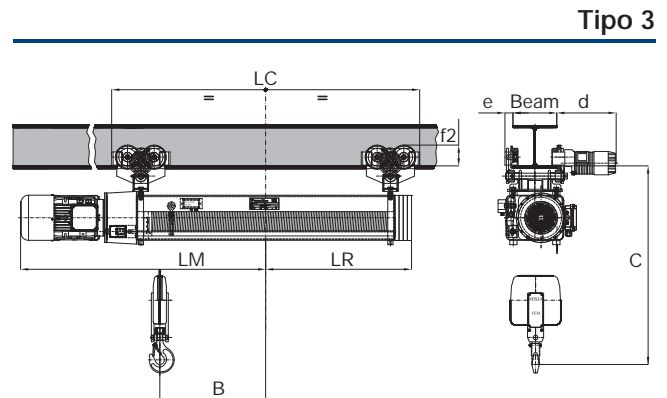
Paranco Hoist	Portata Capacity	Corsa gancio Hook travel	Dimensioni Dimensions					Motori cilindrici Cylindrical motors				Peso Weight				
			C mm	H mm	A mm	LR mm	B mm	Speed m/min	LM mm	Speed m/min	LM mm					
308	1,6	46	570	370	450	625	459	N	1260	V	1260	320				
						760	594						1400	1400		
						890	727								1530	1530
						1025	862									
312	2,5	32	640	370	450	625	459	N	1260	V	1330	330				
						760	594						1400	1470		
						890	727								1530	1600
						1025	862									
316	3,2	40	640	370	450	625	459	N	1300	V	1330	330				
						760	594						1440	1470		
						890	727								1570	1600
						1025	862									
525	5	32	730	440	510	640	445	N	1400	V	1450	410				
						775	580						1530	1580		
						910	715								1665	1715
						1045	850									

N - V - NA - VA = velocità di sollevamento (vedi tabella sopra) / lifting speeds (see table above)

### Paranchi speciali SERIE XML XML SERIES special hoists

### PARANCI SPECIALI S2 - A 2 TIRI DI FUNE (2/1) CORSE GANCIO LUNGHE SPECIAL HOIST S2 - 2 ROPE FALLS (2/1) HIGH LIFTING HEIGHT

### Tipo 3 CARRELLO MONOTRAVE A INGOMBRO NORMALE STANDARD HEADROOM TROLLEY



#### CARATTERISTICHE TECNICHE PARANCI SERIE XML - TECHNICAL DATA HOISTS XML SERIES

Portata max Max capacity	Gruppo Group	Paranco Hoist	Tiri fune Rope falls	Corse gancio Hook travel				Velocità sollevamento - Potenza motore Lifting speed - Motor power							
				m	m	m	m	N		NA		V		VA	
								m/min	kW	m/min	kW	m/min	kW	m/min	kW
1600	2 m	308	2/1	46	57	68	79	8	2,5	8/2,6	2,5/0,8	12	4	12/4	4/1,3
2500	2 m	312	2/1	32	40	48	56	8	4	8/2,6	4/1,3	12	6	12/4	6/2
3200	2 m	316	2/1	32	40	48	56	8	5	8/2,6	5/1,7	12	7	12/4	7/2,3
5000	2 m	525	2/1	32	40	48	56	8	8	8/2,6	8/2,6	12	12	12/4	12/4

#### 3 - CARRELLO A INGOMBRO NORMALE - 3 - STANDARD HEADROOM TROLLEY

Paranco Hoist	Portata Capacity	Corsa gancio Hook travel	Dimensioni Dimensions							Motori cilindrici Cylindrical motors				Peso Weight
			c mm	d mm	e mm	LC mm	LR mm	B mm	f2 mm	Speed m/min	LM mm	Speed m/min	LM mm	
308	1,6	1070	410	55	46	1580	800	459	145	N	1260	V	1260	520
					57	1850	940	594			1400		1400	
					68	2115	1070	727			1530		1530	
					79	2385	1200	862			1660		1660	
312	2,5	1140	410	55	32	1580	800	459	145	N	1260	V	1330	530
					40	1850	940	594			1400		1470	
					48	2115	1070	727			1530		1600	
					56	2385	1200	862			1660		1730	
316	3,2	1140	410	55	32	1580	800	459	145	N	1300	V	1330	530
					40	1850	940	594			1440		1470	
					48	2115	1070	727			1570		1600	
					56	2385	1200	862			1700		1730	
525	5	1270	430	70	32	1660	825	445	165	N	1400	V	1450	670
					40	1930	960	580			1530		1580	
					48	2200	1100	715			1665		1715	
					56	2470	1230	850			1800		1850	

Velocità carrello / Trolley speed: 18 - 18/6 m/min

N - V - NA - VA = velocità di sollevamento (vedi tabella sopra) / lifting speeds (see table above)

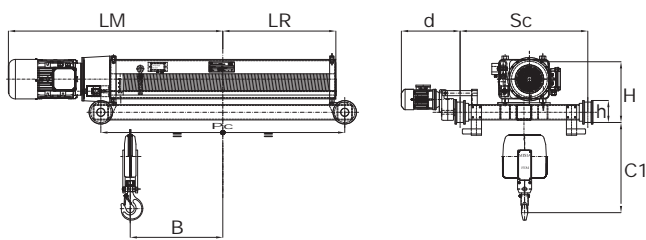
## Paranchi speciali SERIE XML XML SERIES special hoists

## PARANCI SPECIALI S2 - A 2 TIRI DI FUNE (2/1) CORSE GANCIO LUNGHE SPECIAL HOIST S2 - 2 ROPE FALLS (2/1) HIGH LIFTING HEIGHT

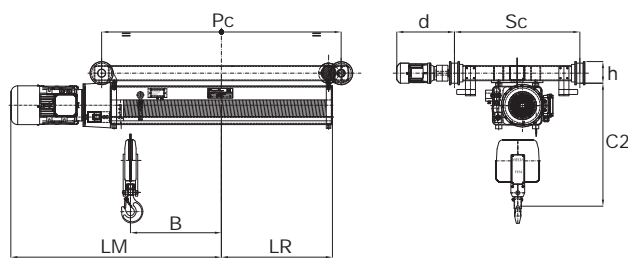
**Tipo 53** CARRELLO BITRAVE CON PARANCO APOGGIATO  
BIRAIL TROLLEY HOIST SUPPORTED

**Tipo 53C1** CARRELLO BITRAVE CON PARANCO SOSPESO  
BIRAIL TROLLEY HOIST SUSPENDED

Tipo 53



Tipo 53C1



### CARATTERISTICHE TECNICHE PARANCI SERIE XML - TECHNICAL DATA HOISTS XML SERIES

Portata max Max capacity	Gruppo Group	Paranco Hoist	Tiri fune Rope falls	Corse gancio Hook travel				Velocità sollevamento - Potenza motore Lifting speed - Motor power							
				m	m	m	m	N		NA		V		VA	
								m/min	kW	m/min	kW	m/min	kW	m/min	kW
1600	2 m	308	2/1	46	57	68	79	8	2,5	8/2,6	2,5/0,8	12	4	12/4	4/1,3
2500	2 m	312	2/1	32	40	48	56	8	4	8/2,6	4/1,3	12	6	12/4	6/2
3200	2 m	316	2/1	32	40	48	56	8	5	8/2,6	5/1,7	12	7	12/4	7/2,3
5000	2 m	525	2/1	32	40	48	56	8	8	8/2,6	8/2,6	12	12	12/4	12/4

### 53-53C1 - CARRELLO BITRAVE - 53-53C1 - BIRAIL TROLLEY

Paranco Hoist	Portata Capacity	Corsa gancio Hook travel	Dimensioni Dimensions											Motori cilindrici Cylindrical motors				Peso Weight
			Sc mm	C1 mm	H mm	C2 mm	h mm	d mm	Pc mm	B mm	Lr mm	f2 mm	Speed m/min	LM mm	Speed m/min	LM mm	Kg	
308	1,6	46	1000	570	490	900	175	175	480	1375	459	625	145	N	1260	V	1260	550
		1645								594	760	1400			1400			
		1910								727	890	1530			1530			
		2180								862	1025	1660			1660			
312	2,5	32	1000	640	490	965	175	175	480	1375	459	625	145	N	1260	V	1330	560
		1645								594	760	1400			1470			
		1910								727	890	1530			1600			
		2180								862	1025	1660			1730			
316	3,2	32	1000	640	490	965	175	175	480	1375	459	625	145	N	1300	V	1330	590
		1645								594	760	1440			1470			
		1910								727	890	1570			1600			
		2180								862	1025	1700			1730			
525	5	32	1000	730	550	1110	175	175	480	1400	445	640	165	N	1400	V	1450	650
		1670								580	775	1530			1580			
		1940								715	910	1665			1715			
		2210								850	1045	1800			1850			

N - V - N A - V A = velocità di sollevamento (vedi tabella sopra) / lifting speeds (see table above)

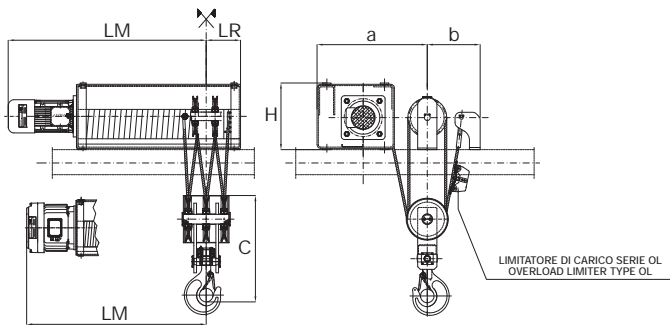
## Paranchi speciali 6/1 6/1 special hoists

PARANCI SPECIALI A SINGOLA USCITA FUNE  
DAL TAMBURO 6/1  
SPECIAL HOIST WITH SINGLE OUTPUT  
FROM THE DRUM 6/1

**SR6** A 6 TIRI DI FUNE (6/1) - 6 ROPE FALLS (6/1)  
**Tipo 5** PARANCO APPOGGIATO - SUPPORTED HOIST  
**Tipo 53** CARRELLO PARANCO MONOROTAIA  
HOIST TROLLEY BIRAIL

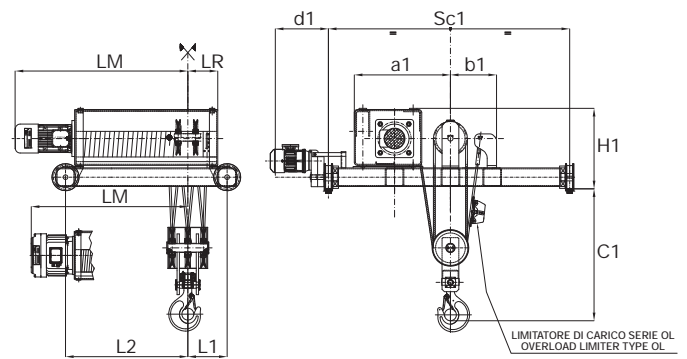
**SR6**

**Tipo 5**



**SR6**

**Tipo 53**



### SR6 - A 6 TIRI DI FUNE (6/1) - SR6 - 6 ROPE FALLS (6/1)

Paranco/Hoist		XM	740			750			950			963			980		
Portata/Capacity		kg	24000			30000			30000			37500			48000		
Gruppo/Group		FEM	1Am			1Am			2m			1Am			1Am		
Corsa gancio/Hook travel		m	6,5	11	15	6,5	11	15	6,5	10,5	16	6,5	10,5	16	6,5	10,5	16
Motori cilindrici Cylindrical motor	Vel. soll./Lift. speed	m/min	2,7			2,7			2,5			3			2,5		
	Pot. mot./Mot. power	kW	12			15			15			24			24		
Motori conici Conical motor	Vel. soll./Lift. speed	m/min	2,7/0,9			2,7/0,9			2,5/0,8			2,5/0,8			-		
	Pot. mot./Mot. power	kW	12/4			15/5			16/5,3			22/7,3			-		
Motori cilindrici/Cylindrical motor	Vel. soll./Lift. speed	m/min	2,7			2,7			2			1,7			1,7		
	Pot. mot./Mot. power	kW	12,5			15			12,5			12,5			16		
Motori conici/Conical motor	Vel. soll./Lift. speed	m/min	2,7/0,3			2,7/0,5			2/0,5			1,7/0,4			1,7/0,4		
	Pot. mot./Mot. power	kW	13/3			15/2,5			13/3			13/3			16/4		
Fig 5	H	mm	530			530			625			625			625		
	c	mm	900			1000			1100			1100			1240		
	a	mm	840			840			990			990			990		
	b	mm	380			380			480			480			480		
	LR	mm	250			257			277			288			189		
Motori cilindrici/Cylindrical motor	LM	mm	1175	1605	1995	1165	1595	1985	1305	1720	2220	1370	1790	2290	/	/	/
Motori conici/Conical motor	LM	mm	1065	1495	1885	1065	1495	1885	1125	1540	2040	1190	1610	2110	1290	1710	2210
Peso/Weight		≈ kg	900	1000	1080	980	1080	1160	1480	1630	1810	1480	1630	1810	1610	1760	1940
Fig 53	SC1	mm	2000			2000			2500			2500			2500		
	H1	mm	790			790			900			900			940		
	c1	mm	1100			1200			1300			1300			1450		
	d1	mm	570			570			570			570			570		
	a	mm	840			840			990			990			990		
	b	mm	380			380			480			480			480		
	L1	mm	420			430			460			520			450		
	L2	mm	670	1100	1500	680	1110	1510	800	1210	1710	850	1260	1760	950	1360	1860
LR	mm	250			257			277			288			189			
Motori cilindrici/Cylindrical motor	LM	mm	1175	1605	1995	1165	1595	1985	1305	1720	2220	1370	1790	2290	/	/	/
Motori conici/Conical motor	LM	mm	1065	1495	1885	1065	1495	1885	1125	1540	2040	1190	1610	2110	1290	1710	2210
Peso/Weight		≈ kg	1750	1900	2030	2030	2230	2410	2470	2720	3000	3170	3420	3700	3690	3940	4220

Velocità carrello / Trolley speed: 16 - 16/5,3 m/min

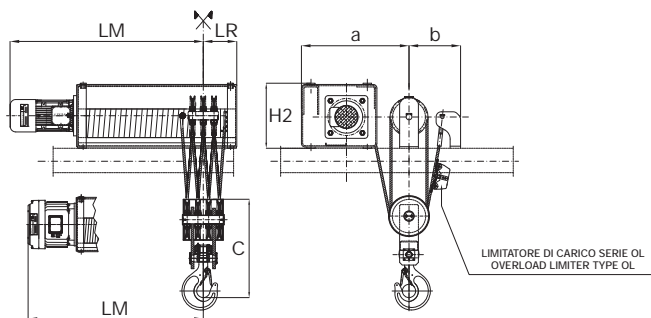
## Paranchi speciali 8/1 8/1 special hoists

## PARANCHI SPECIALI A SINGOLA USCITA FUNE DAL TAMBURO 8/1 SPECIAL HOIST WITH SINGLE OUTPUT FROM THE DRUM 8/1

- SR8** A 8 TIRI DI FUNE (8/1) - 8 ROPE FALLS (8/1)  
**Tipo 5** PARANCO APPOGGIATO - SUPPORTED HOIST  
**Tipo 53** CARRELLO PARANCO MONOROTAIA  
 HOIST TROLLEY BIRAIL

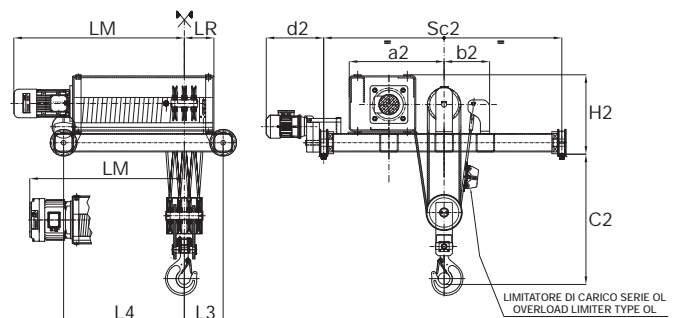
**SR8**

**Tipo 5**



**SR8**

**Tipo 53**



### SR8 - A 8 TIRI DI FUNE (8/1) - SR8 - 8 ROPE FALLS (8/1)

Paranco/Hoist		XM	740			750			950			963			980		
Portata/Capacity		kg	32000			40000			40000			50000			64000		
Gruppo/Group		FEM	1Am			1Am			2m			1Am			1Am		
Corsa gancio/Hook travel		m	4,5	8	11	4,5	8	11	5	8	12	5	8	12	5	8	12
Motori cilindrici Cylindrical motor	Vel. soll./Lift. speed	m/min	2			2			3			2,5			2		
	Pot. mot./Mot. power	kW	12			15			24			24			24		
	Vel. soll./Lift. speed	m/min	2/0,7			2/0,7			2/0,7			2/0,7			-		
	Pot. mot./Mot. power	kW	12/4			15/5			16/5,3			22/7,3			-		
Motori conici Conical motor	Vel. soll./Lift. speed	m/min	2			2			1,5			1,2			1,2		
	Pot. mot./Mot. power	kW	12,5			15			12,5			12,5			16		
	Vel. soll./Lift. speed	m/min	2/0,5			2/0,3			1,5/0,4			1,2/0,3			1,2/0,3		
	Pot. mot./Mot. power	kW	13/3			15/2,5			13/3			13/3			16/4		
Fig 5	H	mm	530			530			625			625			625		
	c	mm	950			1080			1160			1160			1200		
	a	mm	840			840			990			990			990		
	b	mm	380			380			480			480			480		
	LR	mm	250			257			277			288			295		
Motori cilindrici/Cylindrical motor	LM	mm	1175	1605	1995	1165	1595	1985	1305	1720	2220	1370	1790	2290	/	/	/
Motori conici/Conical motor	LM	mm	1065	1495	1885	1065	1495	1885	1125	1540	2040	1190	1610	2110	1185	1605	2105
Peso/Weight		≈ kg	990	1090	1170	1110	1210	1190	1600	1750	1930	1600	1750	1930	1740	1890	2070
Fig 53	SC2	mm	2000			2000			2500			2500			2500		
	H2	mm	790			790			900			940			960		
	c1	mm	1150			1250			1350			1350			1500		
	d2	mm	570			570			570			570			570		
	a2	mm	840			840			990			990			990		
	b2	mm	380			380			480			480			480		
	L3	mm	430			490			520			520			600		
	L4	mm	680	1110	1510	730	1160	1560	860	1270	1770	850	1260	1760	900	1310	1810
LR	mm	250			257			277			288			295			
Motori cilindrici/Cylindrical motor	LM	mm	1175	1605	1995	1165	1595	1985	1305	1720	2220	1370	1790	2290	/	/	/
Motori conici/Conical motor	LM	mm	1065	1495	1885	1065	1495	1885	1125	1540	2040	1190	1610	2110	1185	1605	2105
Peso/Weight		≈ kg	2030	2230	2410	2840	3040	3220	3290	3540	3820	3290	3540	3820	3760	4010	4290

Velocità carrello / Trolley speed: 16 - 16/5,3 m/min